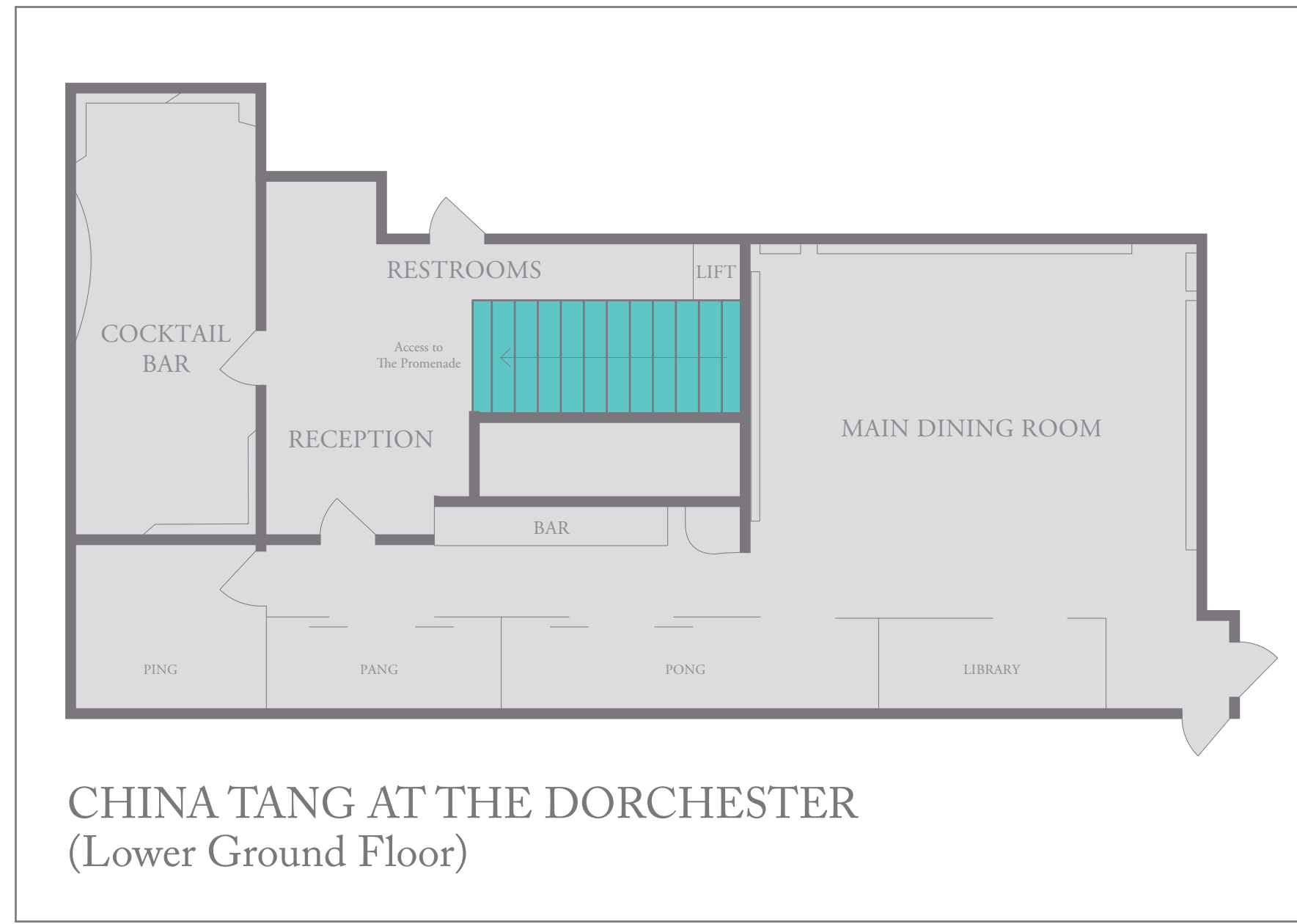
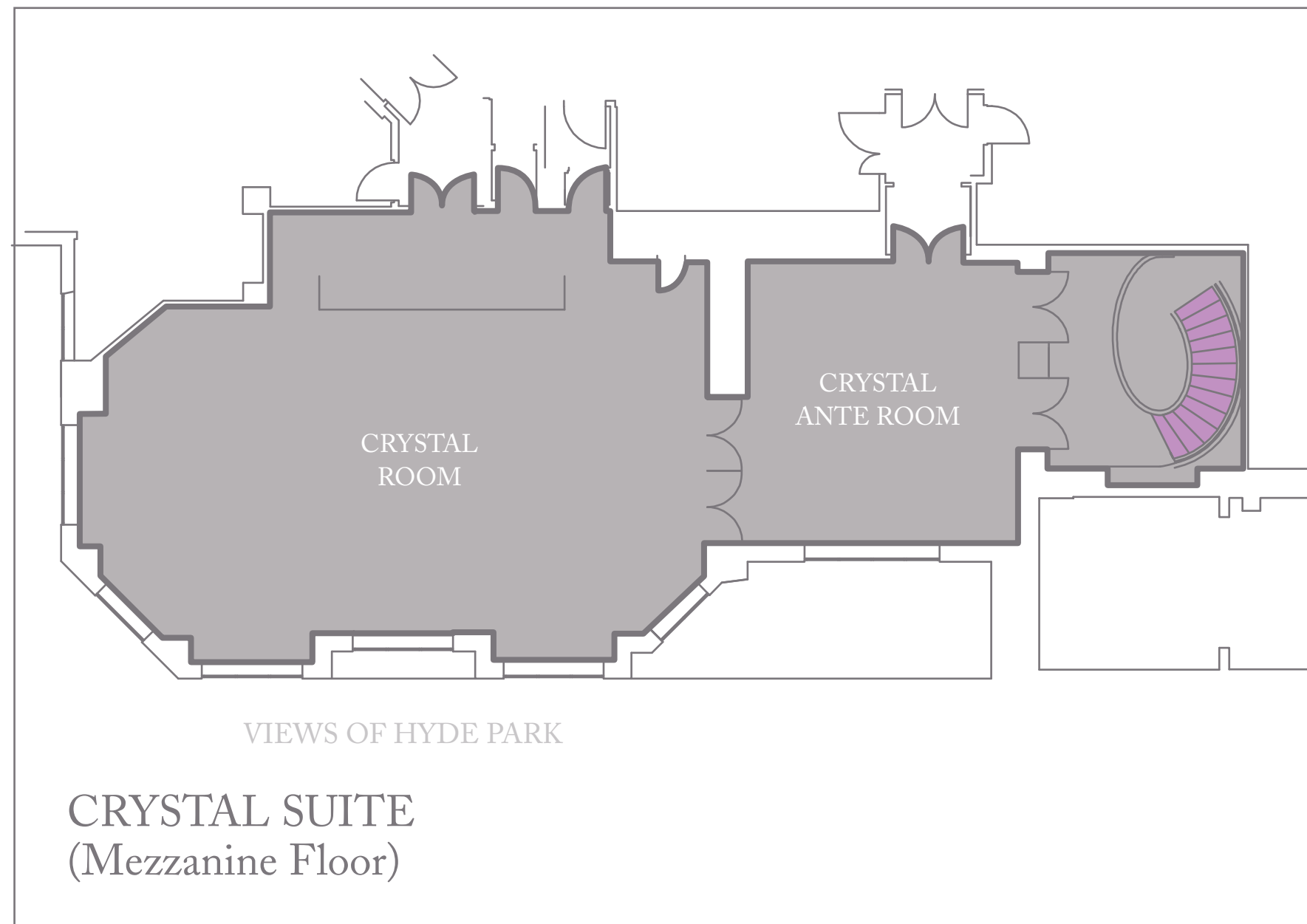


# The Dorchester

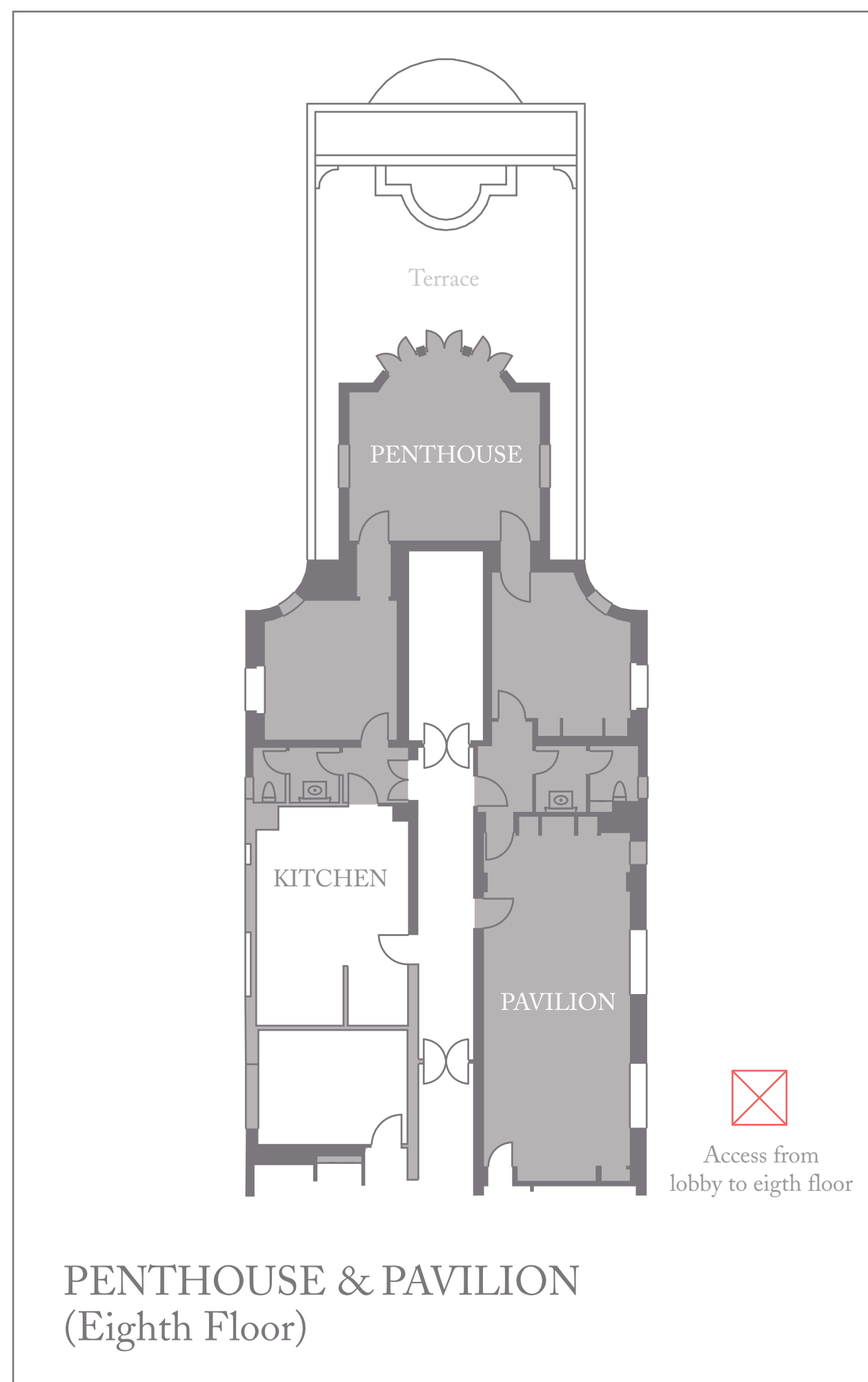
Dorchester Collection



CHINA TANG AT THE DORCHESTER  
(Lower Ground Floor)



CRYSTAL SUITE  
(Mezzanine Floor)

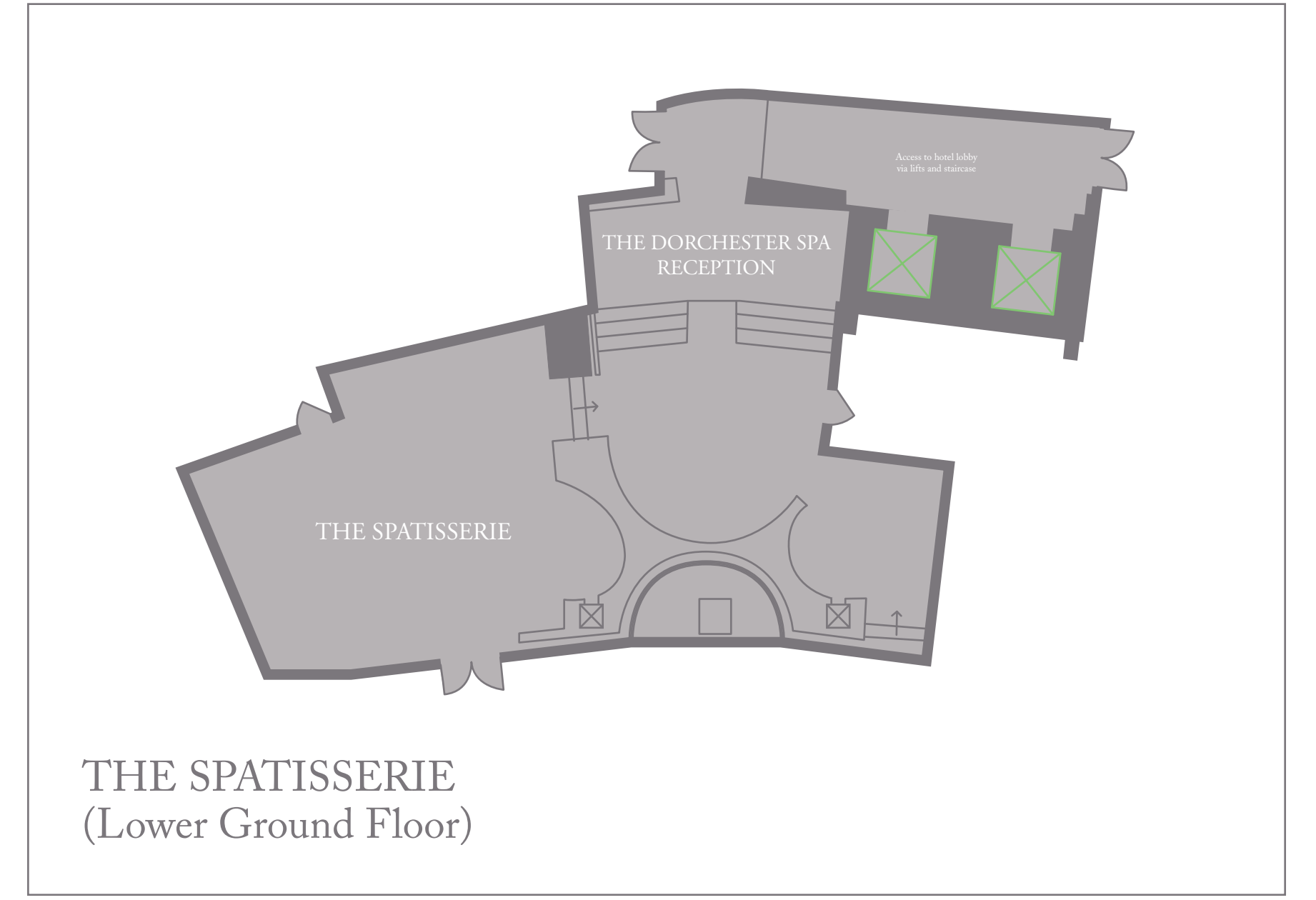


PENTHOUSE & PAVILION  
(Eighth Floor)

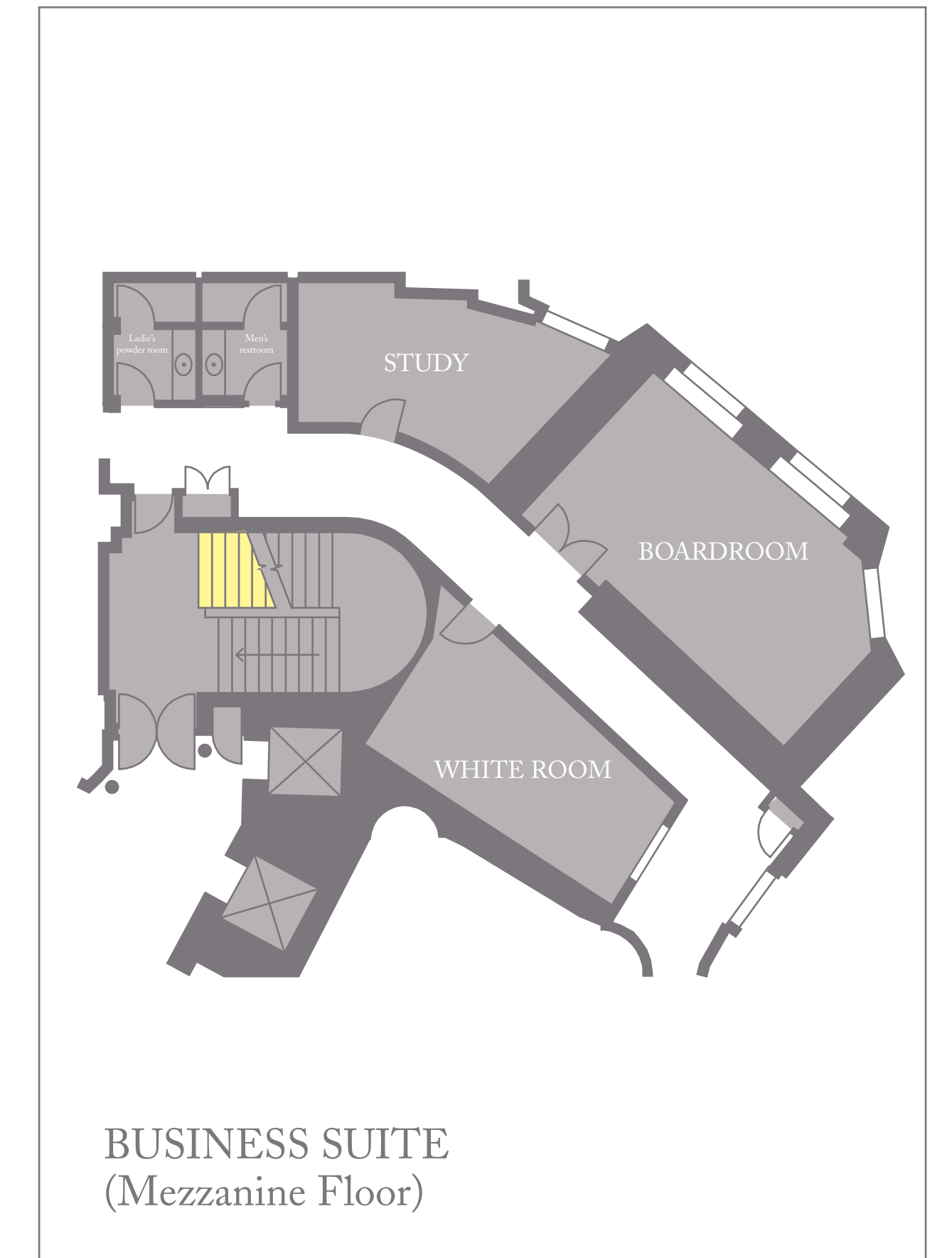
## GROUND FLOOR



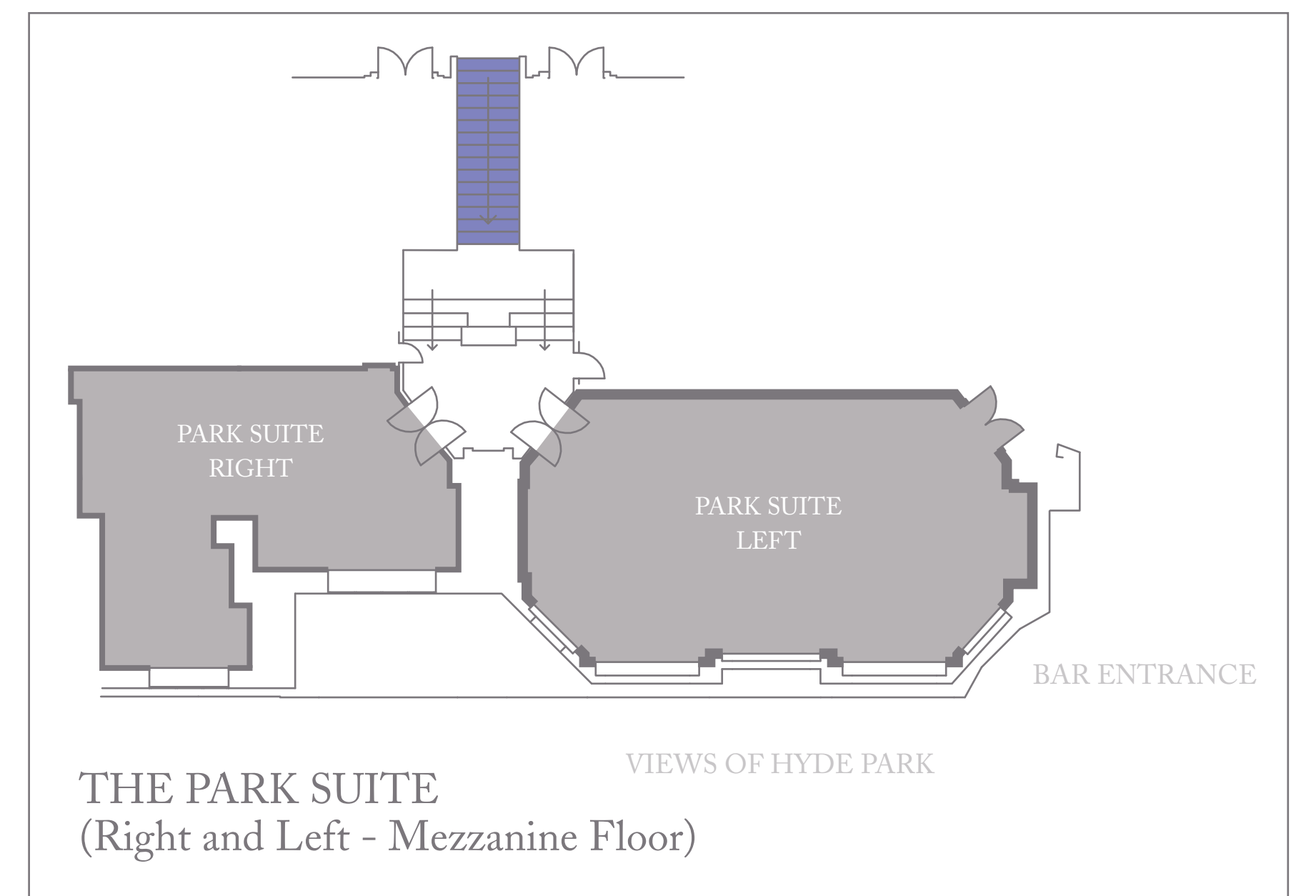
## PARK LANE



THE SPATISSERIE  
(Lower Ground Floor)



BUSINESS SUITE  
(Mezzanine Floor)

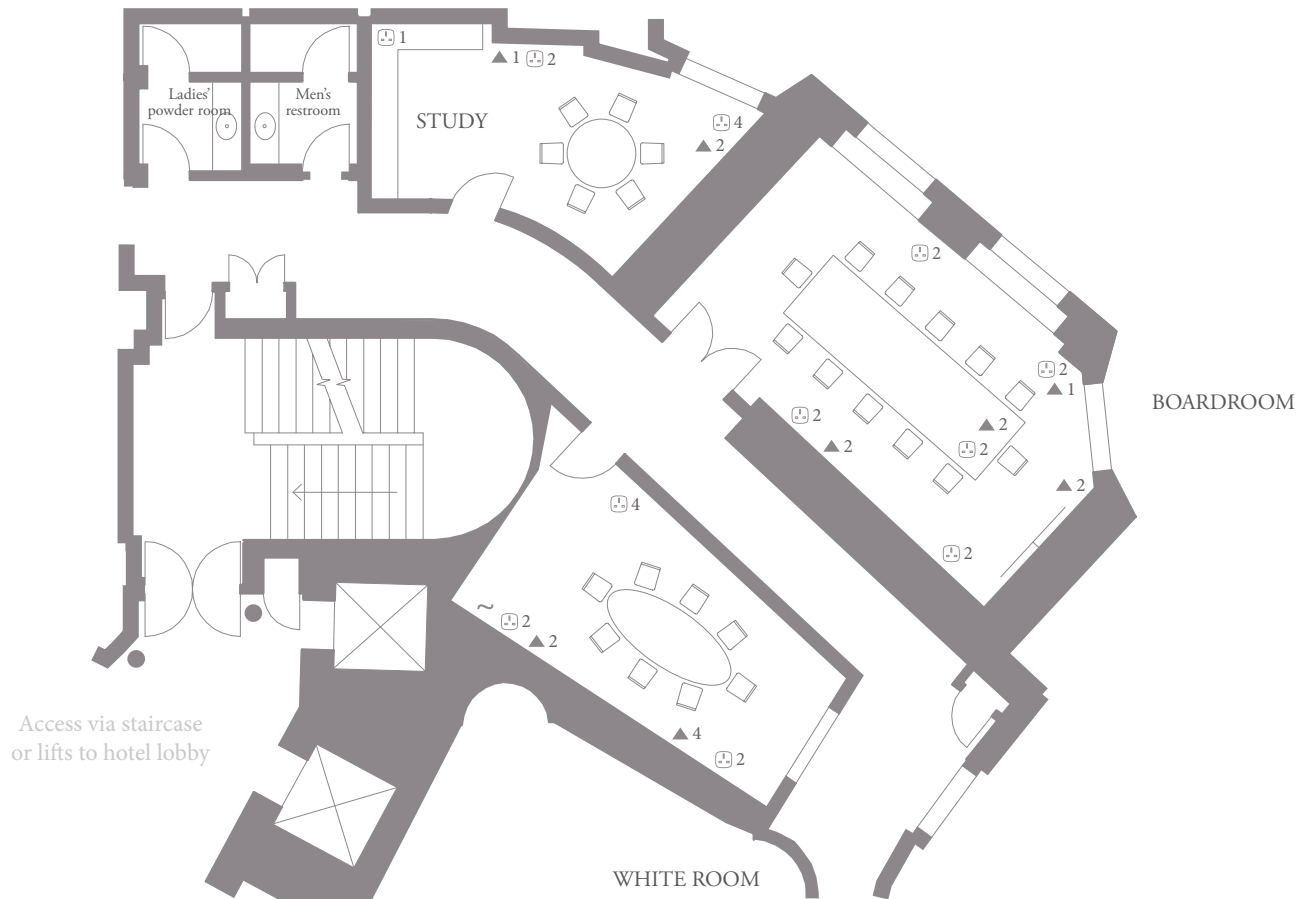


THE PARK SUITE  
(Right and Left - Mezzanine Floor)

KEY	
[Dark Grey Box]	Event Room
[Light Grey Box]	Public Space and Restaurants

# The Dorchester

## *Business Suite – mezzanine floor*



Key	Symbol
Power Socket	⊕
Cat 5 / IP / ISDN	▲
VGA	~

BOARDROOM	Metric	Imperial
Area	28 sq m	301 sq ft
Ceiling height (highest)	2.26m	7' 4"
Ceiling height (lowest)	2.26m	7' 4"
Length (maximum)	7.2m	23' 7"
Width (maximum)	4m	13' 1"

Capacities	Maximum
Breakfast	12
Boardroom	12
Dinner	12
Lunch	12

STUDY	Metric	Imperial
Area	16 sq m	172 sq ft
Ceiling height (highest)	2.25m	7' 4"
Ceiling height (lowest)	2.25m	7' 4"
Length (maximum)	5m	16' 4"
Width (maximum)	3.2m	10' 5"

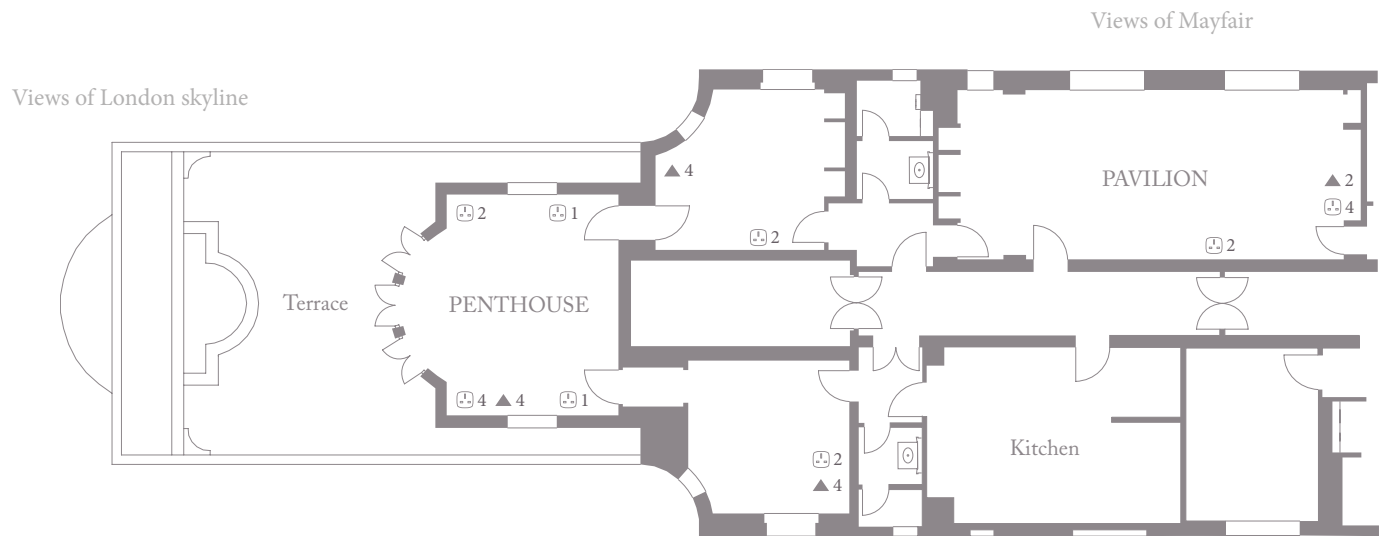
Capacities	Maximum
Breakfast	6
Boardroom	6
Dinner	6
Lunch	6

WHITE ROOM	Metric	Imperial
Area	13 sq m	139 sq ft
Ceiling height (highest)	2.25m	7' 4"
Ceiling height (lowest)	2.25m	7' 4"
Length (maximum)	4.4m	14' 5"
Width (maximum)	3m	9' 10"

Capacities	Maximum
Breakfast	8
Boardroom	8
Dinner	8
Lunch	8

# The Dorchester

## *Penthouse & Pavilion - eighth floor*



The lifts are along the corridor and connect to the hotel lobby

Key	Symbol
Power Socket	⊞
Cat 5 / IP / ISDN	▲

PENTHOUSE	Metric	Imperial
Area	27 sq m	290 sq ft
Ceiling height (highest)	2.49m	8' 2"
Ceiling height (lowest)	2.49m	8' 2"
Length (maximum)	5.9m	19' 4"
Width (maximum)	4.6m	15' 1"

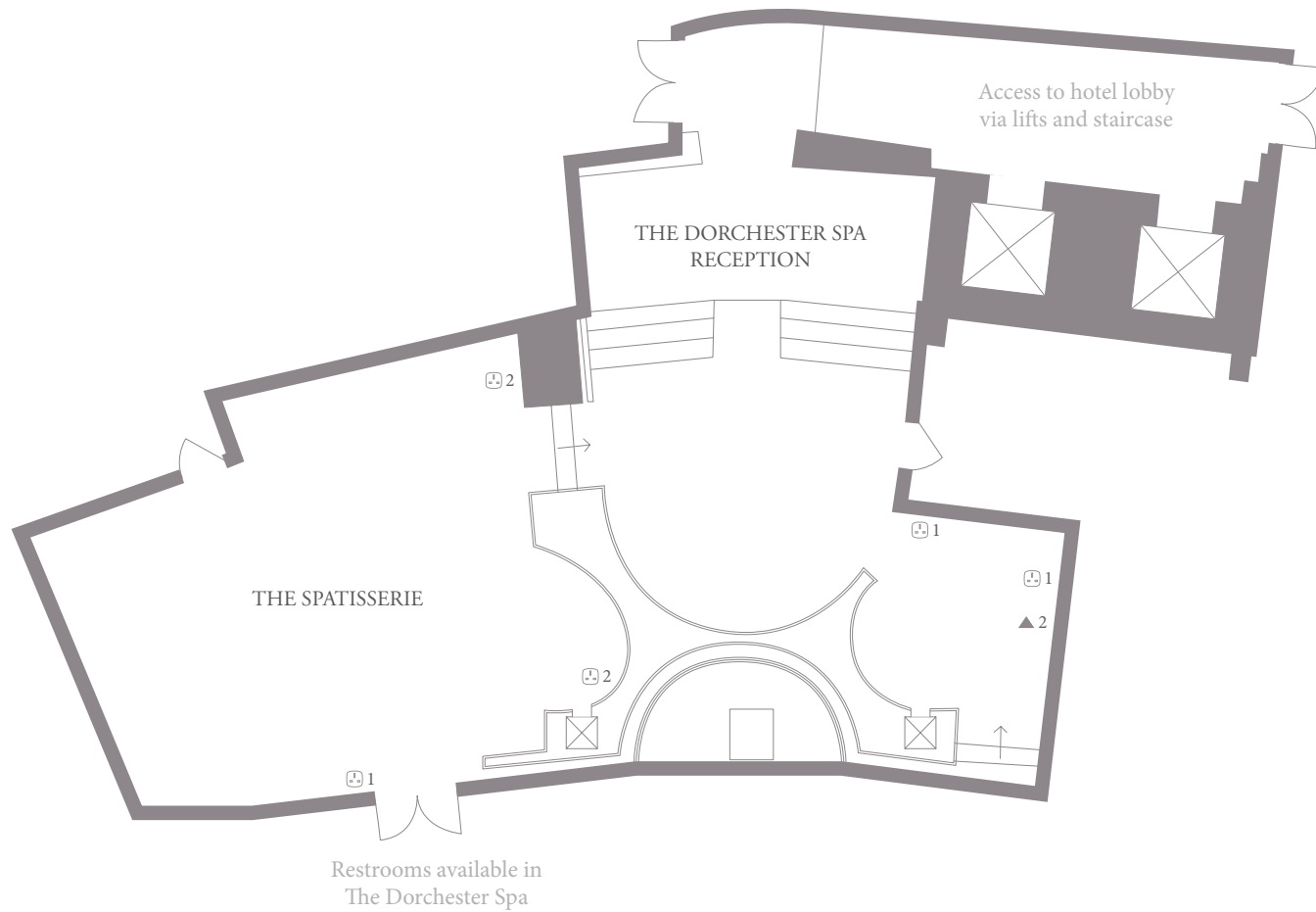
Capacities	Maximum
Breakfast	18
Boardroom	16
Cabaret	-
Classroom	-
Cocktails	40
Dinner	18
Dinner dance	-
Hollow square	-
Lunch	18
Theatre	20
U-shape	-

PAVILION	Metric	Imperial
Area	40 sq m	430 sq ft
Ceiling height (highest)	2.8m	9' 2"
Ceiling height (lowest)	2.6m	8' 6"
Length (maximum)	8.9m	29' 2"
Width (maximum)	4.5m	14' 9"

Capacities	Maximum
Breakfast	34
Boardroom	34
Cabaret	-
Classroom	-
Cocktails	60
Dinner	34
Dinner dance	-
Hollow square	-
Lunch	34
Theatre	40
U-shape	-



The Dorchester  
*The Spatisserie - lower ground floor*



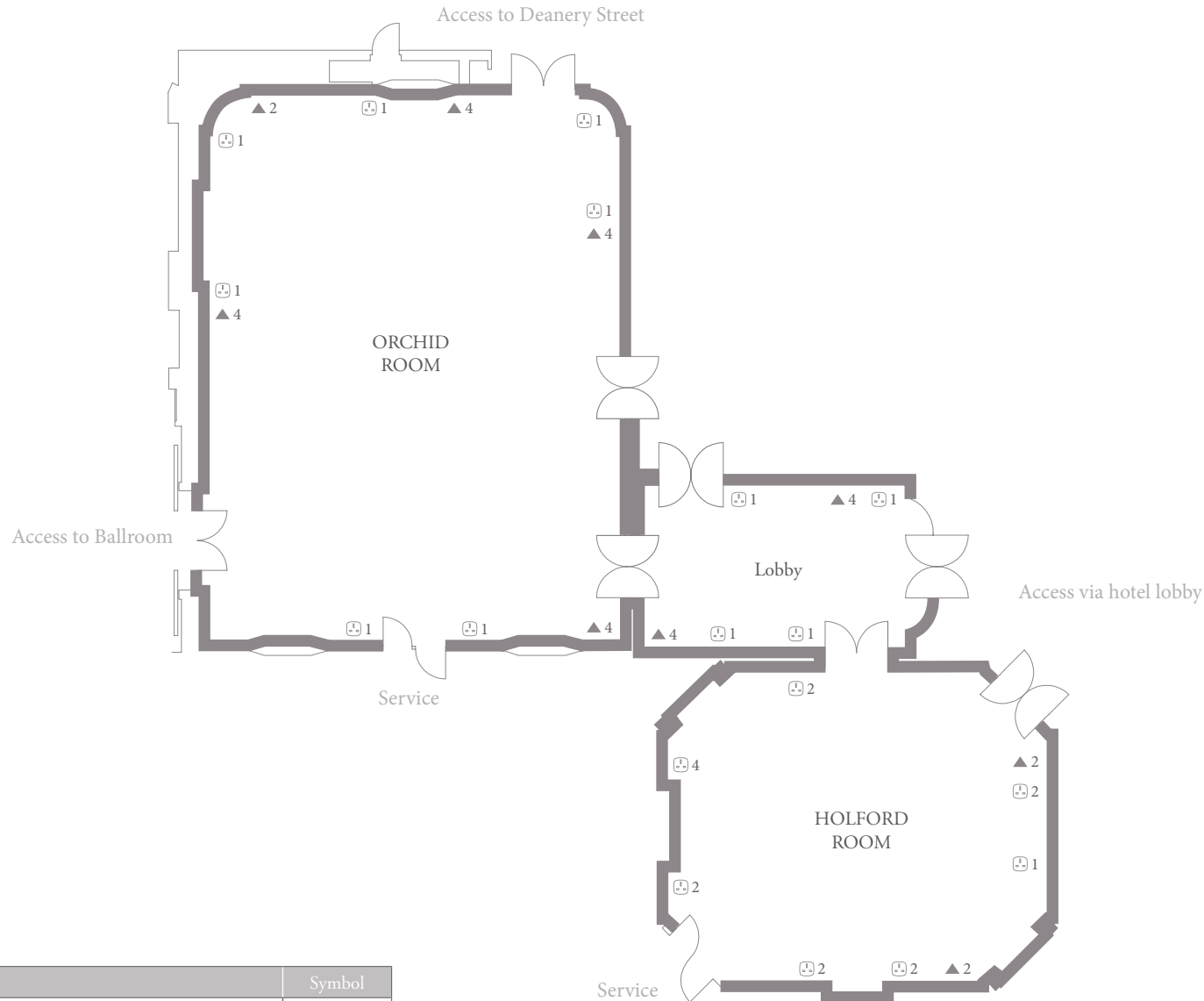
THE SPATISSERIE	Metric	Imperial
Area	52 sq m	559 sq ft
Ceiling height (highest)	2.77m	9' 1"
Ceiling height (lowest)	2.77m	9' 1"
Length (maximum)	8m	26' 3"
Width (maximum)	6.6m	21' 7"

Capacities	Maximum
Breakfast	15
Boardroom	-
Cabaret	16
Classroom	-
Cocktails	30
Dinner	15
Dinner dance	-
Hollow square	-
Lunch	15
Theatre	-
U-shape	-

Key	Symbol
Power Socket	Ⓜ
Cat 5 / IP / ISDN	▲

# The Dorchester

## Holford and Orchid Rooms - ground floor



Key	Symbol
Power Socket	⊞
Cat 5 / IP / ISDN	▲

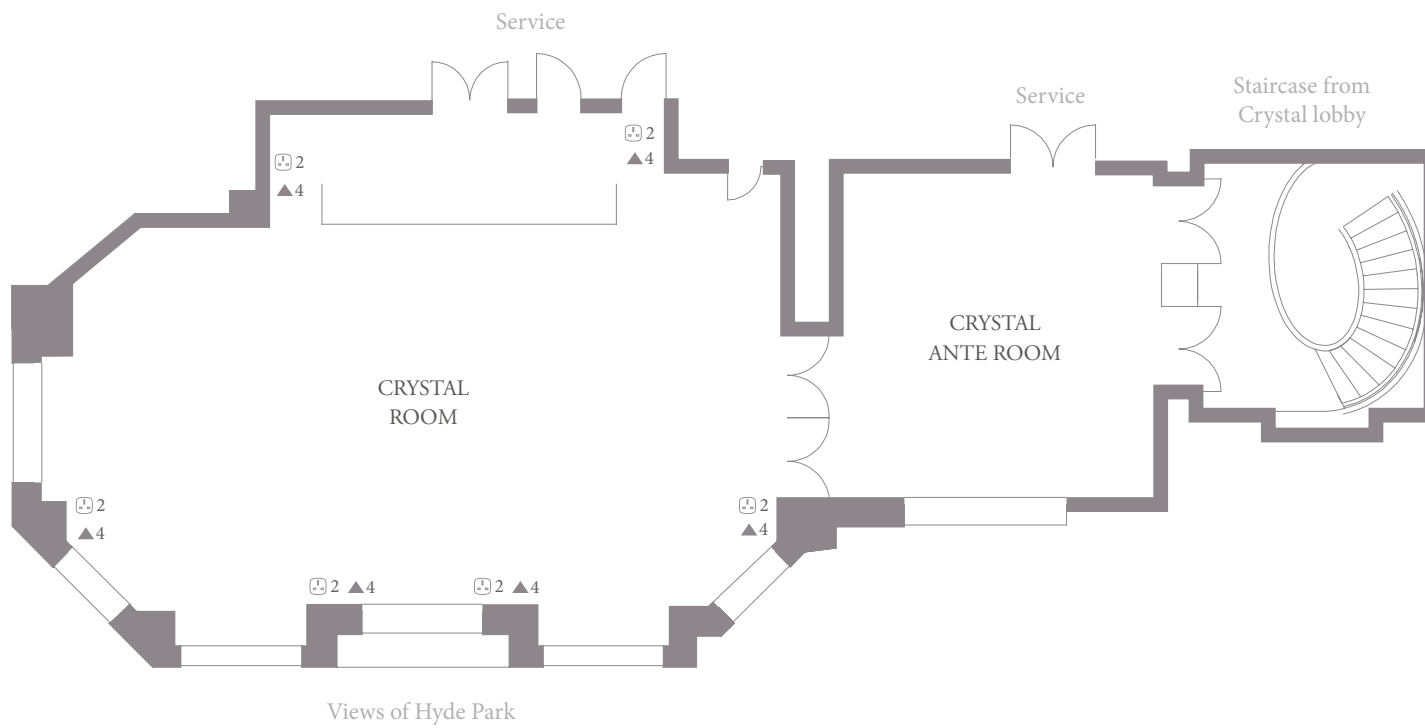
HOLFORD ROOM	Metric	Imperial
Area	81 sq m	871 sq ft
Ceiling height (highest)	4.3m	14' 1"
Ceiling height (lowest)	4m	13' 1"
Length (maximum)	9.8m	32' 2"
Width (maximum)	8.3m	27' 2"

Capacities	Maximum
Breakfast	60
Boardroom	26
Cabaret	40
Classroom	30
Cocktails	100
Dinner	60
Dinner dance	-
Hollow square	36
Lunch	60
Theatre	50
U-shape	30

ORCHID ROOM	Metric	Imperial
Area	159 sq m	1711 sq ft
Ceiling height (highest)	3.88m	12' 8"
Ceiling height (lowest)	3.58m	11' 8"
Length (maximum)	14.5m	47' 6"
Width (maximum)	11m	36' 1"

Capacities	Maximum
Breakfast	144
Boardroom	42
Cabaret	72
Classroom	100
Cocktails	250
Dinner	144
Dinner dance	120
Hollow square	60
Lunch	144
Theatre	120
U-shape	42

The Dorchester  
*Crystal Suite - mezzanine floor*



CRYSTAL ROOM	Metric	Imperial
Area	96 sq m	1033 sq ft
Ceiling height (highest)	2.32m	7' 7"
Ceiling height (lowest)	2.12m	6' 11"
Length (maximum)	13.4m	43' 11"
Width (maximum)	7.2m	23' 7"

Capacities	Maximum
Breakfast	70
Boardroom	36
Cabaret	42
Classroom	40
Cocktails	120
Dinner	70
Dinner dance	50
Hollow square	42
Lunch	70
Theatre	60
U-shape	36

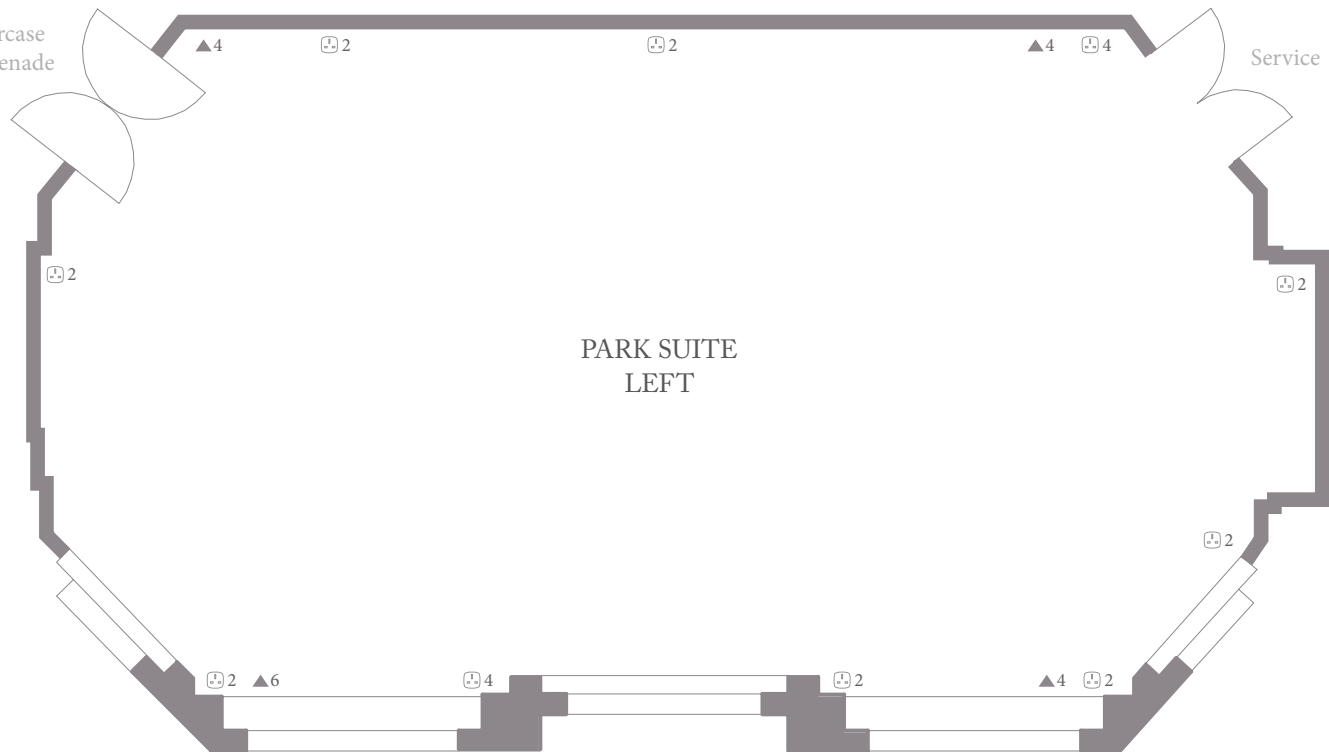
CRYSTAL ANTE ROOM	Metric	Imperial
Area	40 sq m	430 sq ft
Ceiling height (highest)	2.37m	7' 9"
Ceiling height (lowest)	2.22m	7' 3"
Length (maximum)	7.2m	23' 7"
Width (maximum)	5.57m	18' 3"

Key	Symbol
Power Socket	⊞
Cat 5 / IP / ISDN	▲

# The Dorchester

## *Park Suite Left - mezzanine floor*

Access via staircase  
from The Promenade



Views of Hyde Park

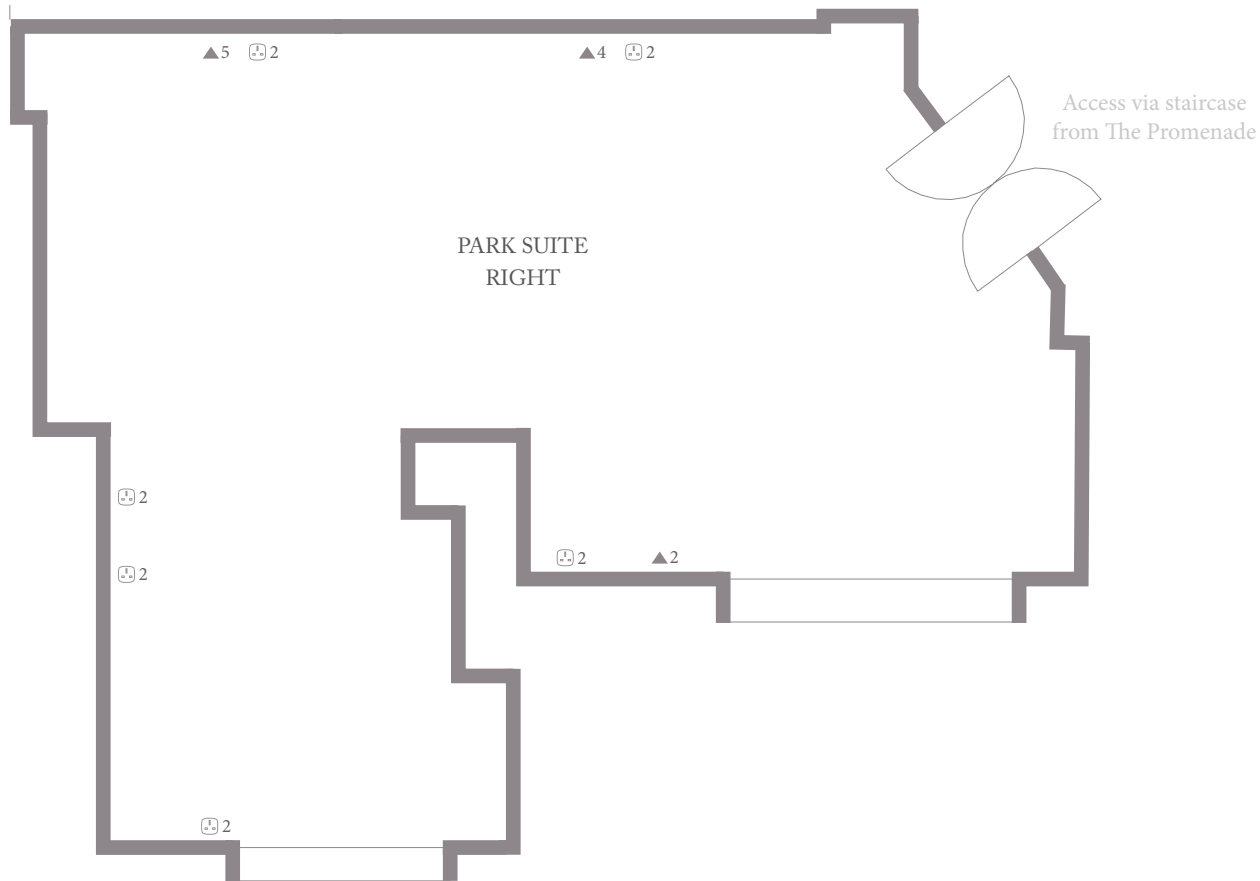
PARK SUITE LEFT	Metric	Imperial
Area	93 sq m	1001 sq ft
Ceiling height (highest)	2.55m	8' 4"
Ceiling height (lowest)	2.55m	8' 4"
Length (maximum)	13.2m	43' 3"
Width (maximum)	7.1m	23' 3"

Capacities	Maximum
Breakfast	60
Boardroom	36
Cabaret	42
Classroom	50
Cocktails	100
Dinner	60
Dinner dance	50
Hollow square	42
Lunch	60
Theatre	60
U-shape	36

Key	Symbol
Power Socket	☐
Cat 5 / IP / ISDN	▲



The Dorchester  
*Park Suite Right - mezzanine floor*



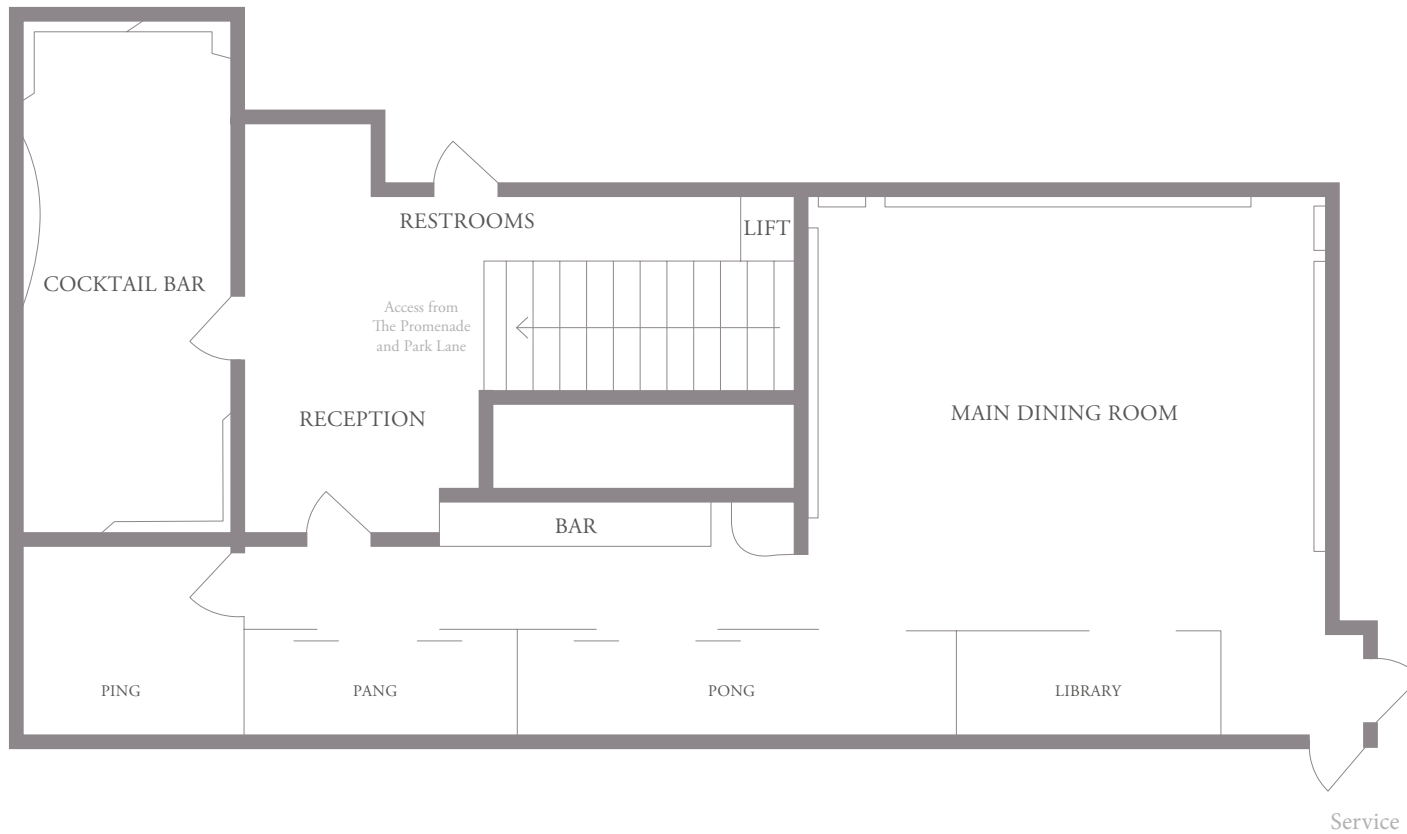
Views of Hyde Park

PARK SUITE RIGHT	Metric	Imperial
Area	76 sq m	818 sq ft
Ceiling height (highest)	2.56m	8' 4"
Ceiling height (lowest)	2.2m	7' 2"
Length (maximum)	9.57m	31' 4"
Width (maximum)	8m	26' 2"

Capacities	Maximum
Breakfast	30
Boardroom	22
Cabaret	-
Classroom	-
Cocktails	60
Dinner	30
Dinner dance	-
Hollow square	-
Lunch	30
Theatre	30
U-shape	-

Key	Symbol
Power Socket	▲
Cat 5 / IP / ISDN	⊞

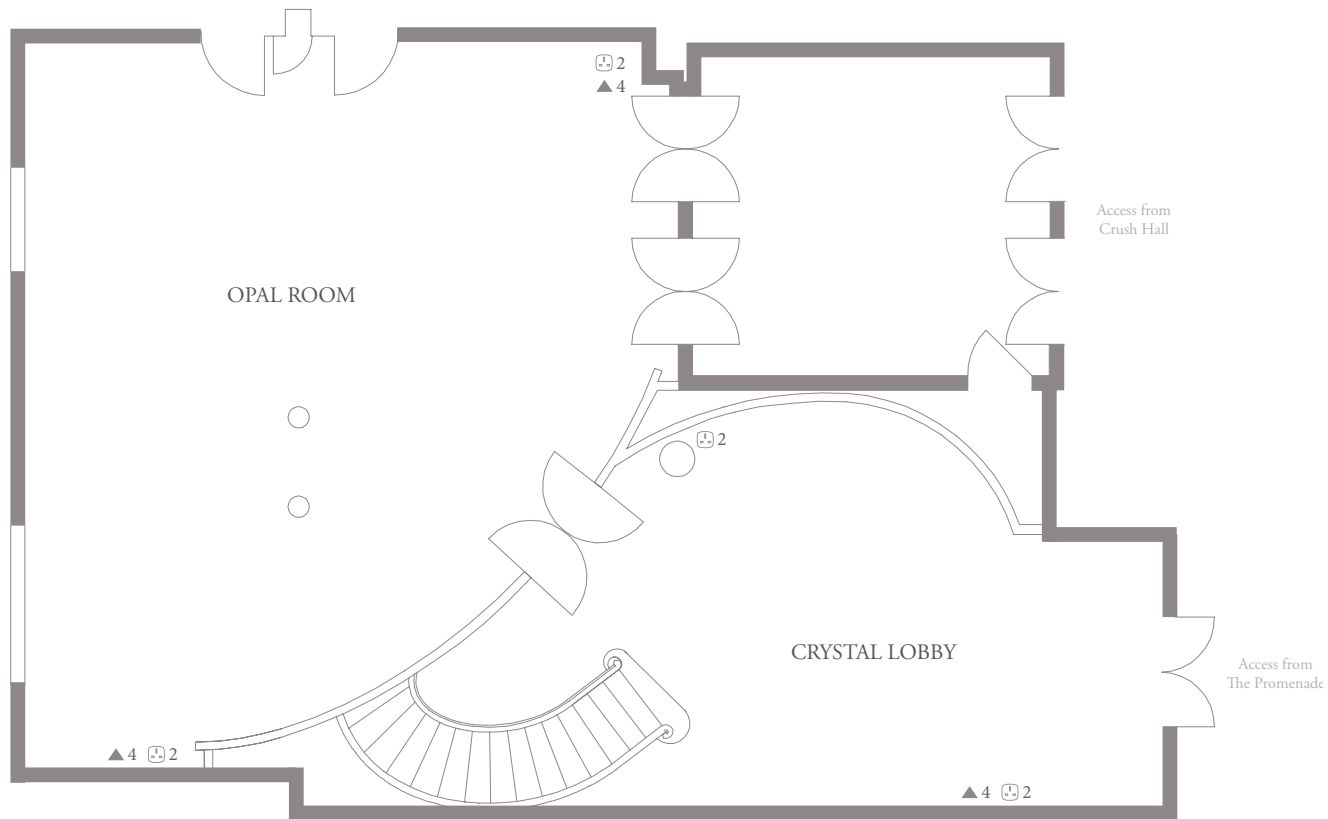
The Dorchester  
*China Tang - lower ground floor*



Capacities	Maximum
Ping	18
Pang	18
Pong	26
Ping & Pang	40
Ping, Pang & Pong	60
Ping, Pang, Pong & Library	80

# The Dorchester

## *Opal and Crystal Room*



OPAL ROOM	Metric	Imperial
Area	60 sq m	645 sq ft
Ceiling height (highest)	tba	tba
Ceiling height (lowest)	tba	tba
Length (maximum)	10.42m	34' 2"
Width (maximum)	9.31m	30' 6"

Capacities	Maximum
Breakfast	30
Boardroom	20
Cabaret	-
Classroom	-
Cocktails	80
Dinner	30
Hollow square	-
Lunch	30
Theatre	40
U-shape	-

CRYSTAL LOBBY	Metric	Imperial
Useful Area	33 sq m	355 sq ft
Ceiling height (highest)	tba	tba
Ceiling height (lowest)	tba	tba
Useful Length	5.86m	19' 2"
Width (maximum)	5.79m	18' 11"

Key	Symbol
Power Socket	⏻
Cat 5 / IP / ISDN	▲