

GROUPS BROCHURE

) (*Dorchester Collection*

DORCHESTER COLLECTION GROUPS COMMITMENT

For bookings of 25 room nights receive:

ONE complimentary room night for every
25 room nights occupied*

TWO complimentary room upgrades
with VIP amenities**

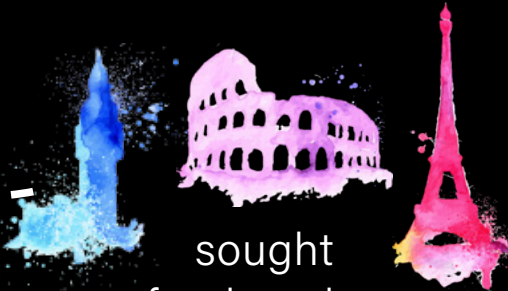
+ welcome amenity
for all rooms**

Blackout dates apply

** Hotel Principe di Savoia offers a maximum of 8 complimentary room nights for any group*

*** All amenities are selected by the hotel*

WHO WE ARE



sought
after locations

2.5

employees to
every guest

all hotels
comfortable
with groups of

30-50
rooms

very proud of the fact
that we are

NCT

cookie-cutter
style hotels



8 Michelin stars
worldwide

what's more, the
quality of dining in our
meeting rooms is equally
exceptional



happening bars



**OUR HOTELS
ARE THE CITY
THEY ARE IN**

LONDON

THE DORCHESTER | 45 PARK LANE

ASCOT

COWORTH PARK

PARIS

HÔTEL PLAZA ATHÉNÉE | LE MEURICE

MILAN

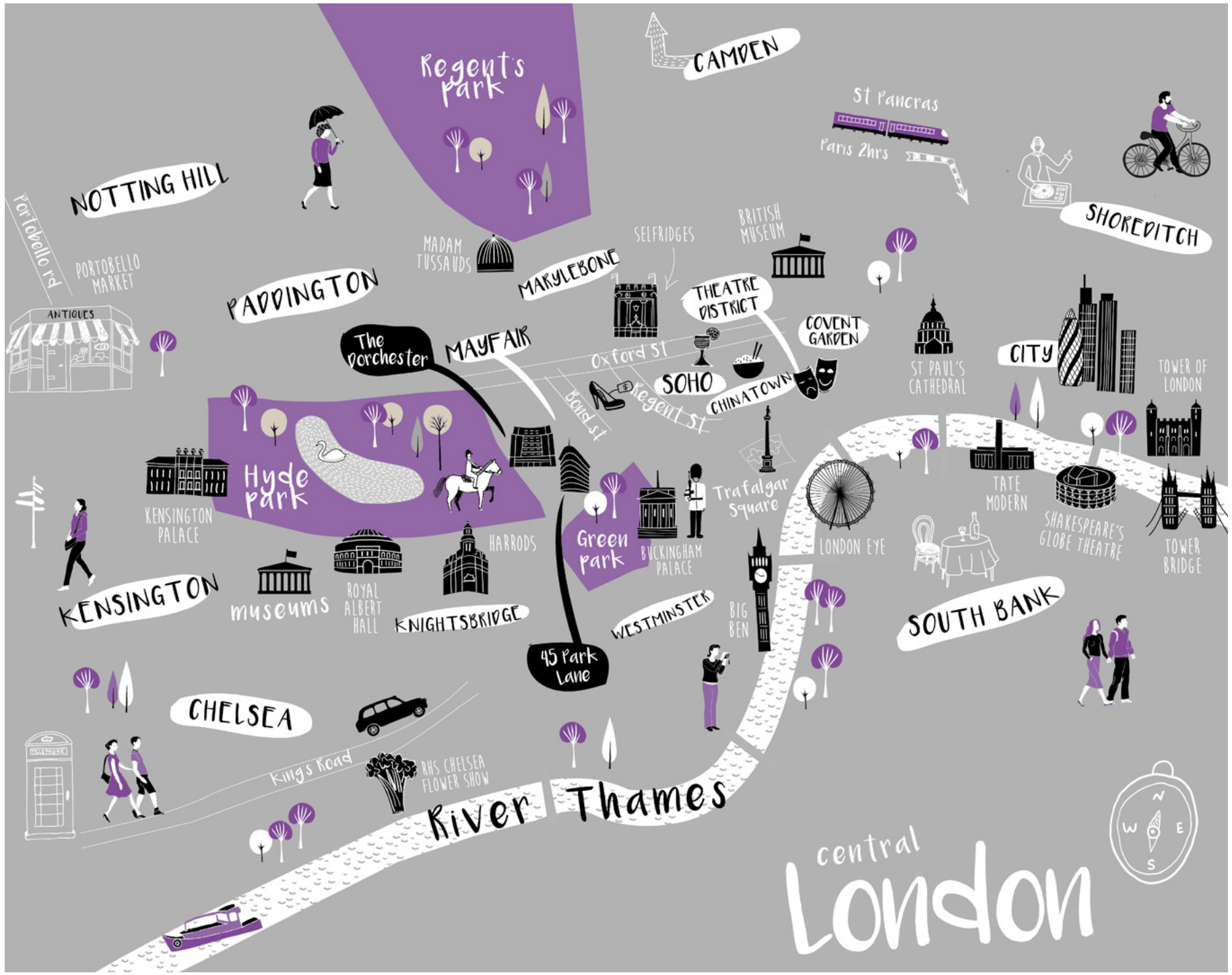
HOTEL PRINCIPE DI SAVOIA

ROME

HOTEL EDEN

BEVERLY HILLS & LOS ANGELES

THE BEVERLY HILLS HOTEL | HOTEL BEL-AIR



NOTTING HILL

Regent's park

CAMDEN

St Pancras

Paris 2hrs

SHOREDITCH

Portobello Rd

PORTOBELLO MARKET

PADDINGTON

MADAM TUSSAIDS

MARLYBONE

SELFRIDGES

BRITISH MUSEUM

THEATRE DISTRICT

COVENT GARDEN

CITY

TOWER OF LONDON

The Dorchester

MAYFAIR

Oxford St

SOHO

CHINATOWN

ST PAUL'S CATHEDRAL

ANTIQUE

Hyde park

Green park

KENSINGTON PALACE

HARRODS

BUCKINGHAM PALACE

Trafalgar Square

LONDON EYE

TATE MODERN

SHAKESPEARE'S GLOBE THEATRE

TOWER BRIDGE

KENSINGTON

museums

ROYAL ALBERT HALL

KNIGHTSBRIDGE

45 Park Lane

WESTMINSTER

BIG BEN

SOUTH BANK

CHELSEA

Kings Road

River Thames

RHS CHELSEA FLOWER SHOW

central London



DISCOVER LONDON

With its unique and vibrant blend of history and culture, London offers visitors an eclectic range of museums, galleries, public parks and attractions. As one of the gourmet capitals of the world, new restaurants, clubs and bars are opening in London all the time, so there are plenty of reasons to come back again and again.

ARTS & CULTURE

Widely regarded as a hotbed of contemporary artistic practice, London has hundreds of small private galleries located in and around Mayfair and St James. A vibrant gallery scene can be found on nearby Cork Street and further east in Shoreditch and Hackney, while the Frieze Art Fair takes place every October in nearby Regent's Park.

Major collections and exhibitions can be seen at the Saatchi Gallery, Tate Modern, Tate Britain, the National Gallery, National Portrait Gallery, Royal Academy of Arts and the Design Museum. London also has a rich selection of museums – many of which are only a short distance from the hotel, such as the British Museum, Victoria and Albert Museum (V&A), Natural History Museum and the Science Museum.

THEATRE & MUSIC

Many of London's West End theatres, the Royal Albert Hall, Royal Opera House and the English National Opera are just a short ride from the hotel. Shakespeare's Globe, The National Theatre and the Southbank Centre are all nearby.

ATTRACTIONS

The Dorchester is close to the majority of London's most popular attractions such as Buckingham Palace, the Houses of Parliament, Big Ben and Westminster Abbey. Located opposite 45 Park Lane, Hyde Park is the city's largest Royal Park. It's home to the Diana, Princess of Wales, Memorial Fountain and the Serpentine Gallery. Visitors can also enjoy a range of leisure activities including jogging, tennis, horse-riding, and boating on the Serpentine.

SHOPPING

Near the hotel, discover London's most exclusive shopping areas such as New Bond Street, Old Bond Street, South Molton Street, Knightsbridge, Sloane Square and Chelsea. With a wide range of leading brands, high street names and specialist retail outlets, Oxford Street, Regent Street, Piccadilly and Covent Garden are also within walking distance.

BARS & RESTAURANTS

Within easy reach of London's finest bars and restaurants, guests are in an ideal position to sample London's culinary delights. From fine dining to international cuisine, London is home to some of the world's most acclaimed chefs. With an array of traditional pubs, stylish gastropubs and contemporary bars in the area, you'll be able to take full advantage of London's vibrant nightlife.



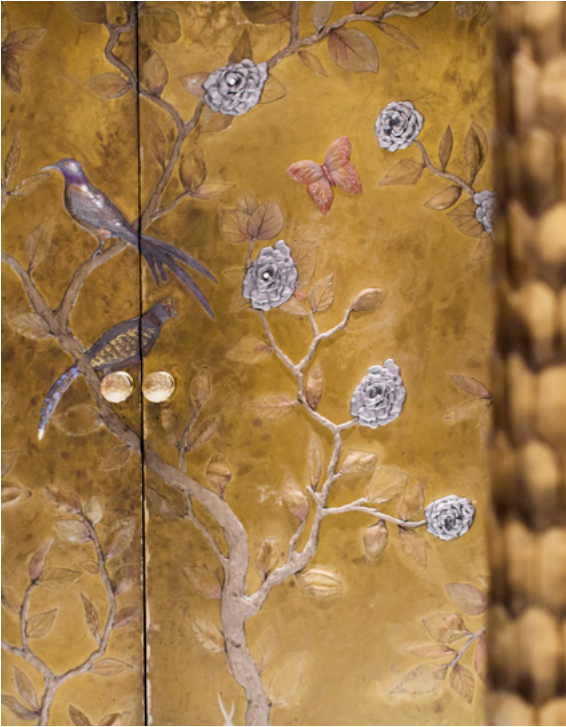


The Dorchester

THE DORCHESTER LONDON

QUITE SIMPLY THE PLACE TO BE IN LONDON

As one of the world's most iconic hotels, The Dorchester is a favourite of celebrities, world leaders, royalty and high society – it is quite simply the place to be in London. Come and experience the epitome of timeless glamour.





RESTAURANTS & BARS

THE GRILL AT THE DORCHESTER

At the heart of the hotel, The Grill is a three-rosette restaurant headed up by the talented Tom Booton, our youngest ever head chef. Delicious dishes range from grill favourites alongside our chef's signature inventive desserts. Lively and welcoming, the restaurant fuses The Dorchester's iconic elegance with a contemporary tone and creative details. Available for exclusive use.

PARCAFÉ

Our coffee shop serves a variety of delicious drinks and bites, and is located on Park Lane overlooking Hyde Park.

ALAIN DUCASSE AT THE DORCHESTER

A three Michelin-starred restaurant, Alain Ducasse at The Dorchester offers contemporary French cuisine in elegant surroundings. Executive chef Jean-Philippe Blondet interprets Ducasse's cuisine by championing seasonal produce. Signature dishes include truffled chicken quenelles and a classic vegetable cookpot. Private dining areas are available.

ORCHID ROOM

The heart of the hotel, the Orchid Room is open all day for breakfast, lunch and light suppers. It's a beautiful setting for indulging in The Dorchester's world famous traditional afternoon tea, which has been voted the best in London for a record of three times by the British Tea Council.

CHINA TANG AT THE DORCHESTER

With an atmosphere inspired by the bustling Shanghai of the 1920s, China Tang is considered one of London's hottest restaurants. Indulge in authentic Cantonese food and all-day dim sum accompanied by a classic cocktail menu in the bar. Private dining areas are available.

THE DORCHESTER ROOFTOP

Your table awaits at the most sought-after spot in town. With a menu of tempting light bites and sensational cocktails, The 'wow' moment begins from the moment you arrive on the top floor, where you'll be led into our bar and the spectacular terrace beyond.

Please note that due to a spring/summer 2022 renovation, some outlets are subject to change.

SPA

THE DORCHESTER SPA

The Dorchester Spa exudes 1930s Art Deco glamour and contemporary design. Signature facials are by internationally renowned brands Carol Joy London, Aromatherapy Associates and Valmont. The spa features four treatment rooms including one double suite, a manicure and pedicure suite and sleek Relaxation Room.

During the spring/summer 2022 renovation, the spa will be temporarily relocated to the fourth floor.

ROOMS & SUITES

Guests can choose from 250 individually designed rooms and suites, decorated in a classic English residential style. Spacious and elegant, each room features specially commissioned fabrics, bespoke furniture and exceedingly comfortable beds, while our Italian marble bathrooms

feature what are rumoured to be the deepest baths in London. All rooms and suites feature Bang & Olufsen LCD screens and Wi-Fi internet access. Our technical guest services team is on hand to assist with technical needs.

There are 56 individually decorated suites including Art Deco Studio Suites and the beautifully restored Dorchester and Park Suites, by leading designer Alexandra Champalimaud. Most suites enjoy breathtaking views over Hyde Park and many interconnect with up to five rooms.

Known collectively as the 'roof suites,' The Audley Penthouse, The Terrace Penthouse and Elizabeth Taylor Harlequin Suite evoke the spirit of 1930s Hollywood glamour. All three suites feature fresh, modern and luxurious interiors, outdoor terraces with unrivalled views over London, and a dedicated team of butlers on hand to take care of your every wish.



The Dorchester Rooftop

Executive King Room



Deluxe King Room





EVENTS & MEETINGS

THE BALLROOM

One of the grandest banqueting rooms in London, with its own entrance on Park Lane, The Ballroom can hold up to 1,000 people for cocktails or 510 for dinner.

CRYSTAL SUITE

The Art Deco-inspired Crystal Suite offers cool, golden-hued interiors and a sweeping curved staircase with unrivalled views over Hyde Park.

THE PENTHOUSE AND PAVILION

With a beautiful terrace, fountain and views across Mayfair, The Penthouse and Pavilion offers one of London's most exquisite settings. Combined, The Penthouse is perfect for cocktails followed by lunch or dinner in The Pavilion, with anterooms and cloakrooms serving each. The Penthouse has its own kitchens and bespoke menus.

BUSINESS SUITE

Comprising the Boardroom and Study – the largest seating up to 12 people, the executive lounge provides the ideal environment in which to work or relax.

CHEF'S TABLE

Without doubt one of the most exciting dining rooms in London, this is the original 'chef's table,' located within the hotel's master kitchens, offering bespoke private dining for up to 12 guests.

MEETING FACILITIES

Wi-Fi internet access for up to 50 connections at a time
Complimentary refreshment bar (Business Suite)
Business Suite
Technical guest services
In-house florist
Team of chefs and a sommelier to create individual menus
Private cloakrooms

ADDITIONAL SERVICES

IN-ROOM TECHNOLOGY/ENTERTAINMENT

Bang & Olufsen LCD screen TV with integrated entertainment system
Wi-Fi internet access
Bose Wave music system and docking station
In-room printer, fax, scanner, copier

HOTEL SERVICES

Florist at The Dorchester
Theatre desk
Accessible facilities
Business suite
Chauffeur service and valet parking

GUEST SERVICES

Concierge
24-hour in-room dining
Technical guest services
Laundry, dry-cleaning, pressing
Children's amenities and babysitting
In-room beauty treatments
Cross-hotel billing with 45 Park Lane

ROOM	BANQUET	DINNER DANCE	COCKTAIL	CABARET	THEATRE	CLASSROOM	BOARDROOM	M ²	FT ²
The Ballroom	510	432	1,000	240	400	300		783	8,417
The Penthouse	18		40		20		16	27	290
The Pavilion	34		60		40		34	40	430
Boardroom							12	28	301
Study							6	16	172
Crystal Suite	70	50	120	42	60	40	36	96	1,033
Chef's Table	12							17	182
							Total	1,007	10,825



Boardroom



Crystal Suite foyer



Gold Room



THE DORCHESTER SUGGESTED ITINERARY FOR GROUPS



DAY ONE

MORNING

Arrive at The Dorchester and meet in one of our private event rooms

LUNCH

Walking tour of Mayfair, followed by lunch at The Windmill, one of London's finest gastropubs

AFTERNOON

Visit Kensington Palace and discover the royal state apartments, followed by a stroll through the beautiful palace gardens

EVENING

Welcome champagne dinner at The Grill at The Dorchester



DAY TWO

MORNING

Business session in one of our private event rooms

LUNCH

Afternoon tea tour on a sightseeing vintage double decker bus around London

AFTERNOON

Gin tasting at The City of London Distillery

EVENING

Drinks reception in the hotel kitchens, followed by dinner at the Chef's Table



DAY THREE

MORNING

Private tour around the Churchill War Rooms, followed by a visit to Westminster Abbey

LUNCH

Street food tour and lunch at Borough Market

AFTERNOON

Visit London's highest viewing platform from The View from the Shard

EVENING

Evening river cruise gala dinner on the Silver Sturgeon



DAY FOUR

MORNING

Backstage tour of the Royal Opera House

LUNCH

Visit the National Portrait Gallery and take lunch in their restaurant

AFTERNOON

Board one of the 'Shopping Shuttles' to Harrods, Selfridges and Fortnum & Mason

EVENING

Gala dinner at the Tower of London with a private viewing of the Crown Jewels



LOCATION

The Dorchester is superbly located in the centre of London overlooking Hyde Park. Heathrow Airport is only 45 minutes by car, while Gatwick Airport is just over 30 minutes away by train: the Gatwick Express departs from Victoria Station (which is five minutes away by car) every 15 minutes. The Eurostar terminal at St Pancras is only ten minutes by car. Our limousine and personal chauffeur service is available for airport pick-up or for use throughout stays; cars include 7-series BMWs, Mercedes Viano 7-seater, and a Rolls Royce Phantom.

Groups & Events Department

+44 (0)20 7319 7082

groupandeventsales.TDL@dorchestercollection.com

PLEASE REFER TO LAST PAGE FOR YOUR REGIONAL SALES CONTACT

The Dorchester

Park Lane, London

W1K 1QA, England

+44 (0)20 7629 8888

dorchestercollection.com

#DCmoments

[f TheDorchester](https://www.facebook.com/TheDorchester)

[t TheDorchester](https://twitter.com/TheDorchester)

[i TheDorchester](https://www.instagram.com/TheDorchester)

CORPORATE OFFICE

Dorchester Collection
Sixth Floor East
Lansdowne House
Berkeley Square
London W1J 6ER, UK

UK SALES

Chanelle Gale, Regional Sales Manager
+44 (0)20 7319 7529
chanelle.gale@dorchestercollection.com

EUROPE SALES

Alison Rutherford, Regional Sales Director
+44 (0)7867 456 335
alison.rutherford@dorchestercollection.com

MIDDLE EAST, RUSSIA & CIS SALES

Daniel Snell, Regional Sales Director
+7 964 500 9212
daniel.snell@dorchestercollection.com

NORTH AMERICA SALES

Dorchester Collection
1040 1st Avenue
PO Box 400
New York, NY 10022

WEST COAST, MIDWEST AND CANADA

Wendy Gillotti, Regional Sales Director
+1 646 532 3801
wendy.gillotti@dorchestercollection.com

EAST COAST

Nuria Candel, Regional Sales Director
+1 646 532 3806
nuria.candel@dorchestercollection.com

SOUTH AMERICA SALES

Dorchester Collection
Calle los Libertadores 445,
San Isidro, Lima 27 Peru

Gloria Mendez, Regional Sales Director
+51 1 440 3809
gloria.mendez@dorchestercollection.com

CHINA SALES

Dorchester Collection
Suite 508A Shanghai Centre
West Building
1376 Nanjing Road (W),
Shanghai 200040, China

Carl Ju, Regional Sales Director
+86 21 62798100
chinasales.DC@dorchestercollection.com

ASPAC SALES

Dorchester Collection
PO Box 294
Epping NSW 1710, Australia

Parris Fotias, Regional Sales Director
+61 (0)2 8812 2263
parris.fotias@dorchestercollection.com

) (*Dorchester Collection*