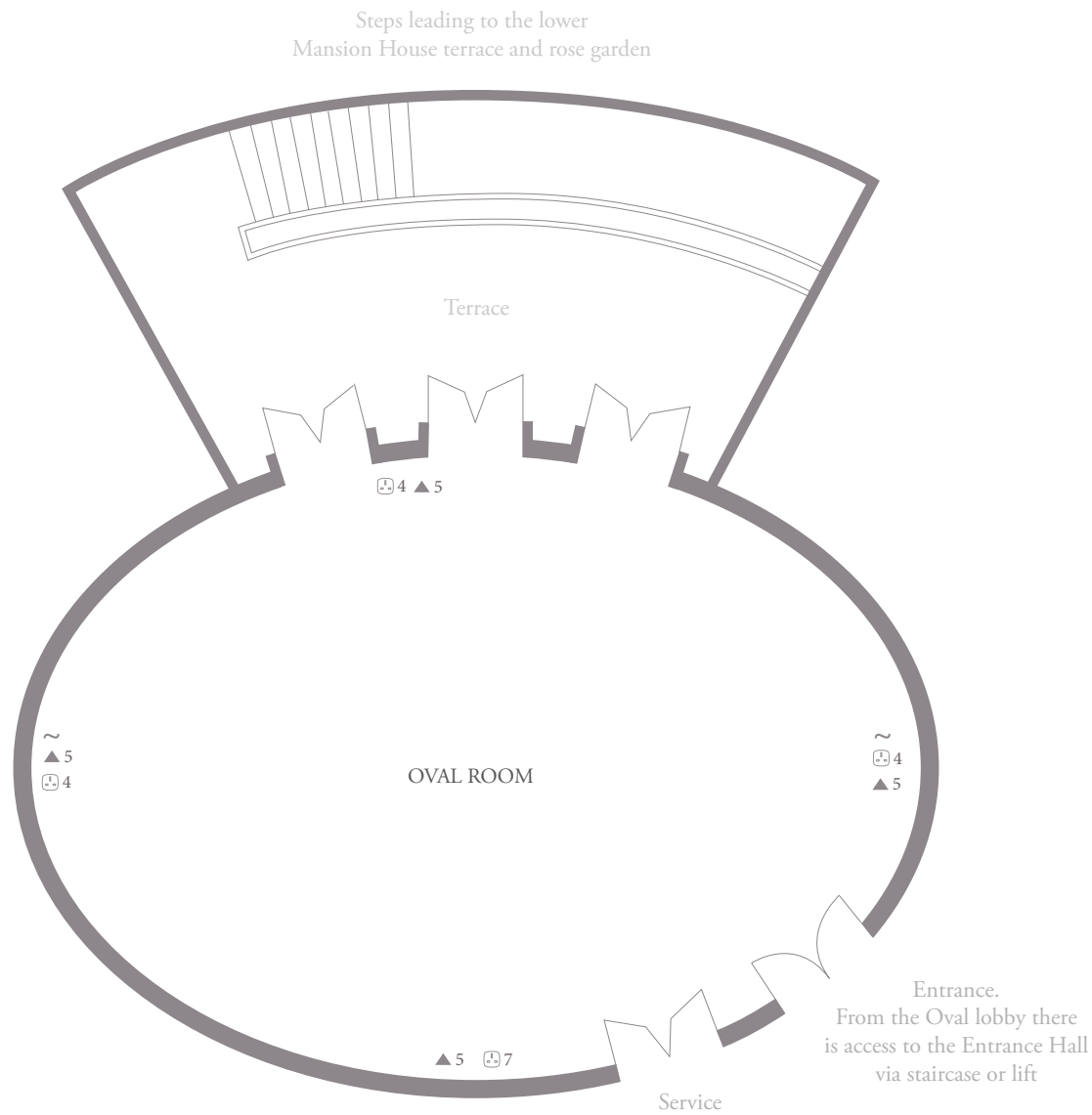


Coworth Park

Oval Room - lower ground floor



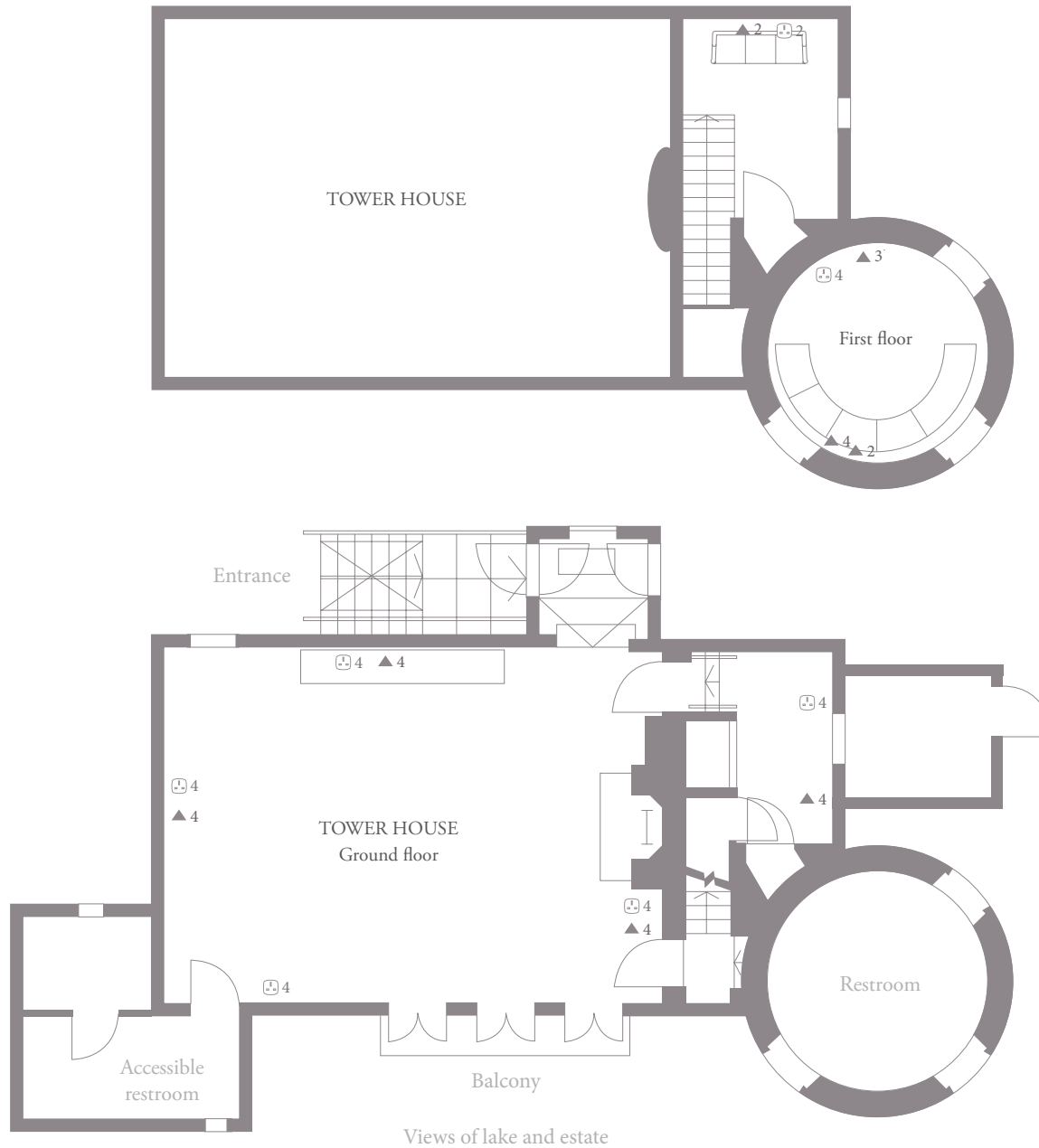
OVAL ROOM	Metric	Imperial
Area	117 sq m	1259 sq ft
Ceiling height (highest)	3.2m	10' 5"
Ceiling height (lowest)	2.66m	8' 8"
Length (maximum)	14.5m	47' 6"
Width (maximum)	10m	32' 9"

Capacities	Maximum
Breakfast	100
Boardroom	42
Cabaret	64
Classroom	60
Cocktails	100
Dinner	100
Dinner dance	70
Hollow square	42
Lunch	100
Theatre	100
U-shape	36

Key	Symbol
Power Socket	⊞
Cat 5 / IP / ISDN	▲
Audio Input Plate	~

Coworth Park

Tower House - ground and first floor



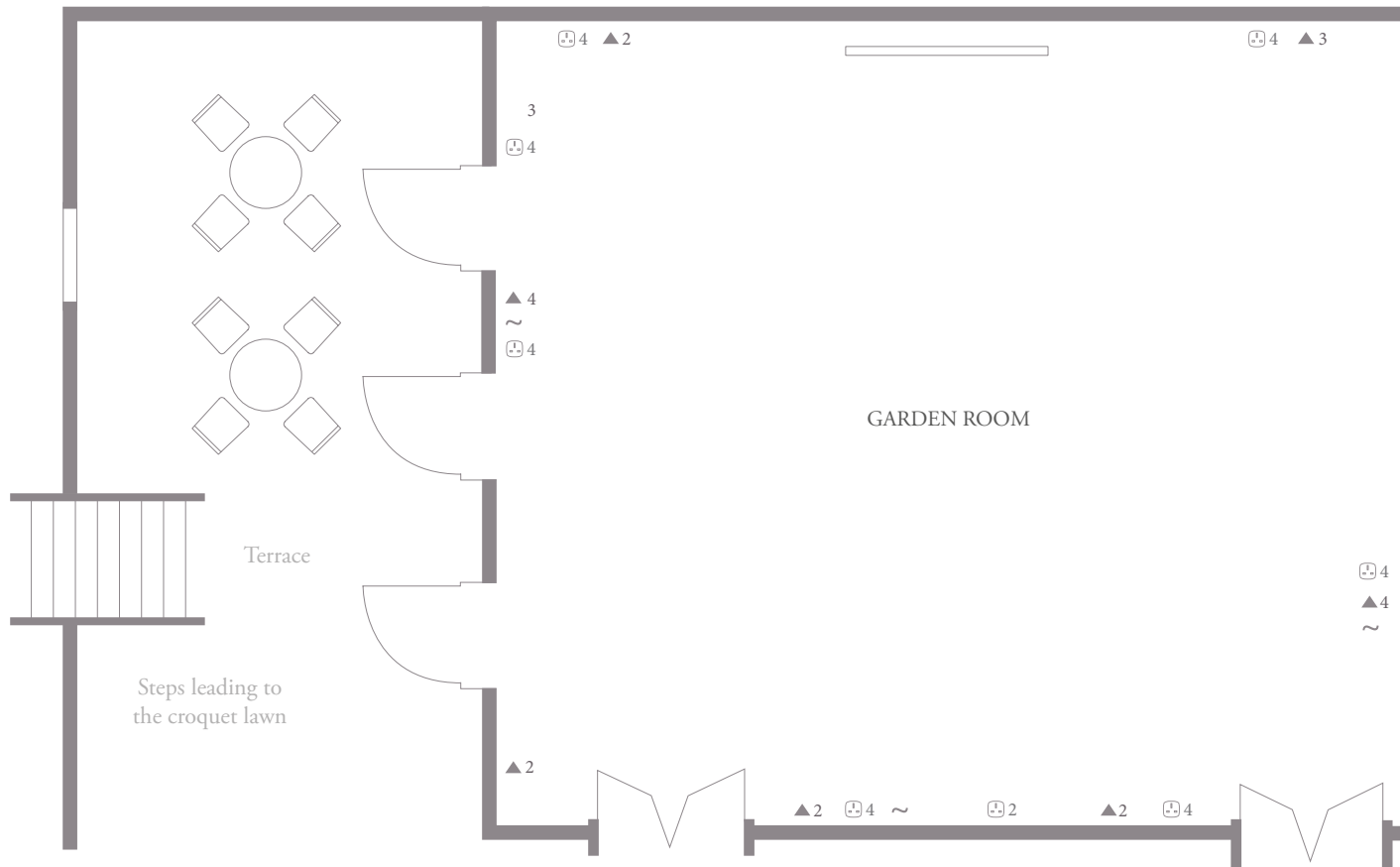
TOWER HOUSE	Metric	Imperial
Area	54 sq m	581 sq ft
Ceiling height (highest)	5m	16' 4"
Ceiling height (lowest)	4.37m	14' 4"
Length (maximum)	8.2m	26' 10"
Width (maximum)	6.2m	20' 4"

Capacities	Maximum
Breakfast	30
Boardroom	18
Cabaret	24
Classroom	18
Cocktails	50
Dinner	30
Dinner dance	"
Hollow square	18
Lunch	30
Theatre	30
U-shape	18

Key	Symbol
Cat 5 / IP	▲
Power Socket	⊖

Coworth Park

Garden Room - lower ground floor



GARDEN ROOM	Metric	Imperial
Area	104 sq m	1119 sq ft
Ceiling height (highest)	3.2m	10' 5"
Ceiling height (lowest)	2.63m	8' 7"
Length (maximum)	10.8m	35' 5"
Width (maximum)	9.6m	31' 5"

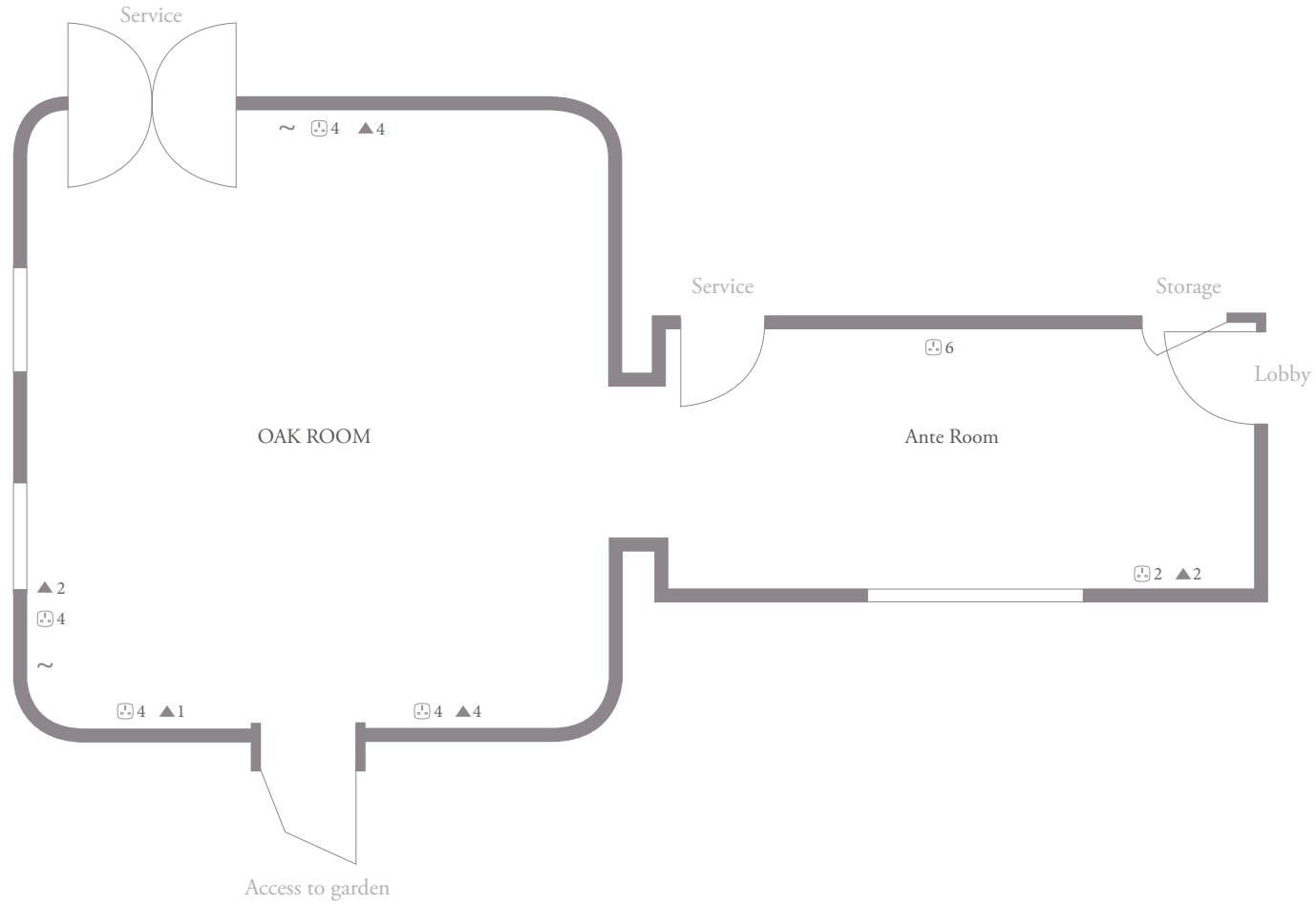
Capacities	Maximum
Breakfast	80
Boardroom	30
Cabaret	48
Classroom	60
Cocktails	100
Dinner	80
Dinner dance	40
Hollow square	30
Lunch	80
Theatre	80
U-shape	30

Key	Symbol
Power Socket	⊕
Cat 5 / IP / ISDN	▲
Audio Input Plate	~

Entrance.
From this lobby there is
access to the Entrance Hall
via staircase or lift

Coworth Park

Oak Room - ground floor



OAK ROOM	Metric	Imperial
Area	48 sq m	516 sq ft
Ceiling height (highest)	3.85m	12' 7"
Ceiling height (lowest)	3m	23' 3"
Length (maximum)	7.1m	23' 3"
Width (maximum)	6.7m	21' 11"

Capacities	Maximum
Breakfast	30
Boardroom	20
Cabaret	24
Classroom	12
Cocktails	50
Dinner	30
Hollow square	24
Lunch	30
Theatre	30
U-shape	18

Key	Symbol
Power Socket	☐
Cat 5 / IP / ISDN	▲
Audio Input Plate	~

Coworth Park
Garden and Oval Rooms

